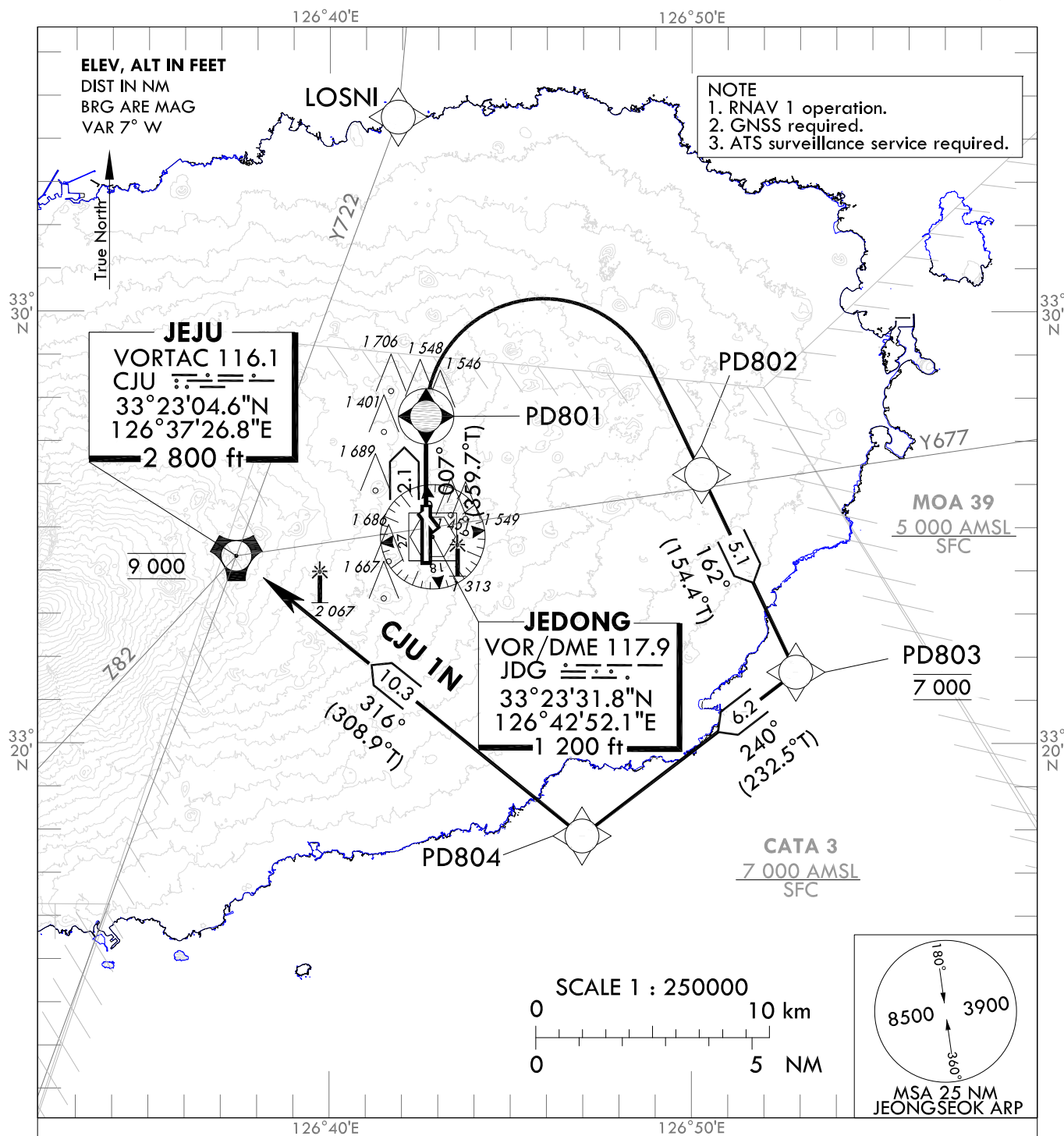


STANDARD DEPARTURE CHART
INSTRUMENT (SID) - ICAO

TRANSITION ALT 14 000
TRANSITION LVL FL 140

JEJU DEP 119.225
JEONGSEOK TWR 124.35

JEJU/Jeongseok(RKPD)
RWY 01
RNAV CJU 1N



GENERAL INFORMATION

1. CJU 1N : 5.8% climb gradient required to 9 000 ft for ATC purpose and avoiding OBST.
2. If unable to comply with flight restrictions or RNAV 1, advise ATC well before departure for alternatives.
3. Departure turn limited to 210 kt IAS maximum until PD804.
4. Within JEJU TMA, maximum 250 kt IAS below 10 000 ft.

RNAV JEJU ONE NOVEMBER DEPARTURE : PD801 - PD802 - PD803 - PD804 - CJU

Change : Withdrawal of Y579.

JEJU/Jeongseok(RKPD)
RWY 01
RNAV CJU 1N

AERONAUTICAL DATA TABULATION

Standard Instrument Departure Procedure Coding Tables

RNAV CJU 1N

Serial Number	Path Descriptor	Waypoint Identifier	Fly-over	Course/Track °M(°T)	Distance (NM)	Turn direction	Altitude (ft)	Speed (kt)	Coordinates	VPA/ RDH	Navigation specification	Remarks
001	CF	PD801	Y	007(359.7)	2.1	-	-	-210	33°26'19.3"N 126°42'40.6"E	-	RNAV 1	-
002	DF	PD802	-	-	-	R	-	-210	33°24'59.1"N 126°50'17.5"E	-	RNAV 1	-
003	TF	PD803	-	162(154.4)	5.1	-	@7 000	-210	33°20'24.7"N 126°52'54.0"E	-	RNAV 1	-
004	TF	PD804	-	240(232.5)	6.2	-	-	-210	33°16'36.5"N 126°47'00.5"E	-	RNAV 1	-
005	TF	CJU	-	316(308.9)	10.3	-	@9 000	-	33°23'04.6"N 126°37'26.8"E	-	RNAV 1	-

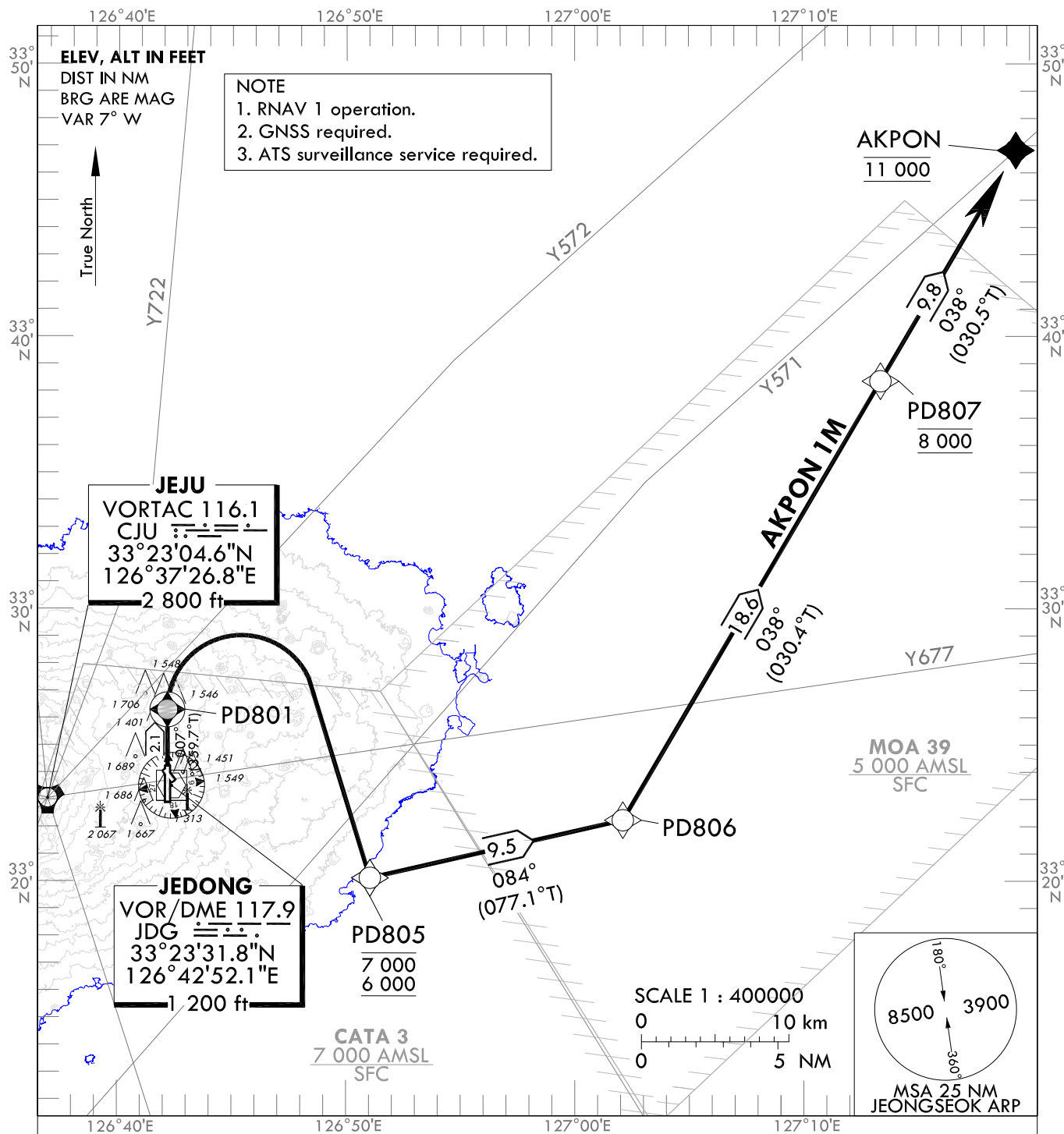
Change : Amended phrases(PD805 → CJU, VPA/TCH → VPA/RDH).

STANDARD DEPARTURE CHART
INSTRUMENT (SID) - ICAO

TRANSITION ALT 14 000
TRANSITION LVL FL 140

JEJU DEP 119.225
JEONGSEOK TWR 124.35

JEJU/Jeongseok(RKPD)
RWY 01
RNAV AKPON 1M



GENERAL INFORMATION

1. AKPON 1M : 6.8% climb gradient required to 6 000 ft for ATC purpose and 5.7% to 2 100 ft for avoiding OBST.
2. If unable to comply with flight restrictions or RNAV 1, advise ATC well before departure for alternatives.
3. Departure turn limited to 210 kt IAS maximum until PD805.
4. Within JEJU TMA, maximum 250 kt IAS below 10 000 ft.

RNAV AKPON ONE MIKE DEPARTURE : PD801 - PD805 - PD806 - PD807 - AKPON

Change : Establishment of standard instrument departure procedure for RWY 01(RNAV AKPON 1M).

JEJU/Jeongseok(RKPD)
RWY 01
RNAV AKPON 1M

AERONAUTICAL DATA TABULATION

Standard Instrument Departure Procedure Coding Tables

RNAV AKPON 1M

Serial Number	Path Descriptor	Waypoint Identifier	Fly-over	Course/Track °M(°T)	Distance (NM)	Turn direction	Altitude (ft)	Speed (kt)	Coordinates	VPA/ RDH	Navigation specification	Remarks
001	CF	PD801	Y	007(359.7)	2.1	-	-	-210	33°26'19.3"N 126°42'40.6"E	-	RNAV 1	-
002	DF	PD805	-	-	-	R	-7 000 +6 000	-210	33°20'09.1"N 126°51'32.7"E	-	RNAV 1	-
003	TF	PD806	-	084(077.1)	9.5	-	-	-	33°22'16.2"N 127°02'36.3"E	-	RNAV 1	-
004	TF	PD807	-	038(030.4)	18.6	-	@8 000	-	33°38'22.3"N 127°13'54.7"E	-	RNAV 1	-
005	TF	AKPON	-	038(030.5)	9.8	-	@11 000	-	33°46'49.6"N 127°19'53.0"E	-	RNAV 1	-

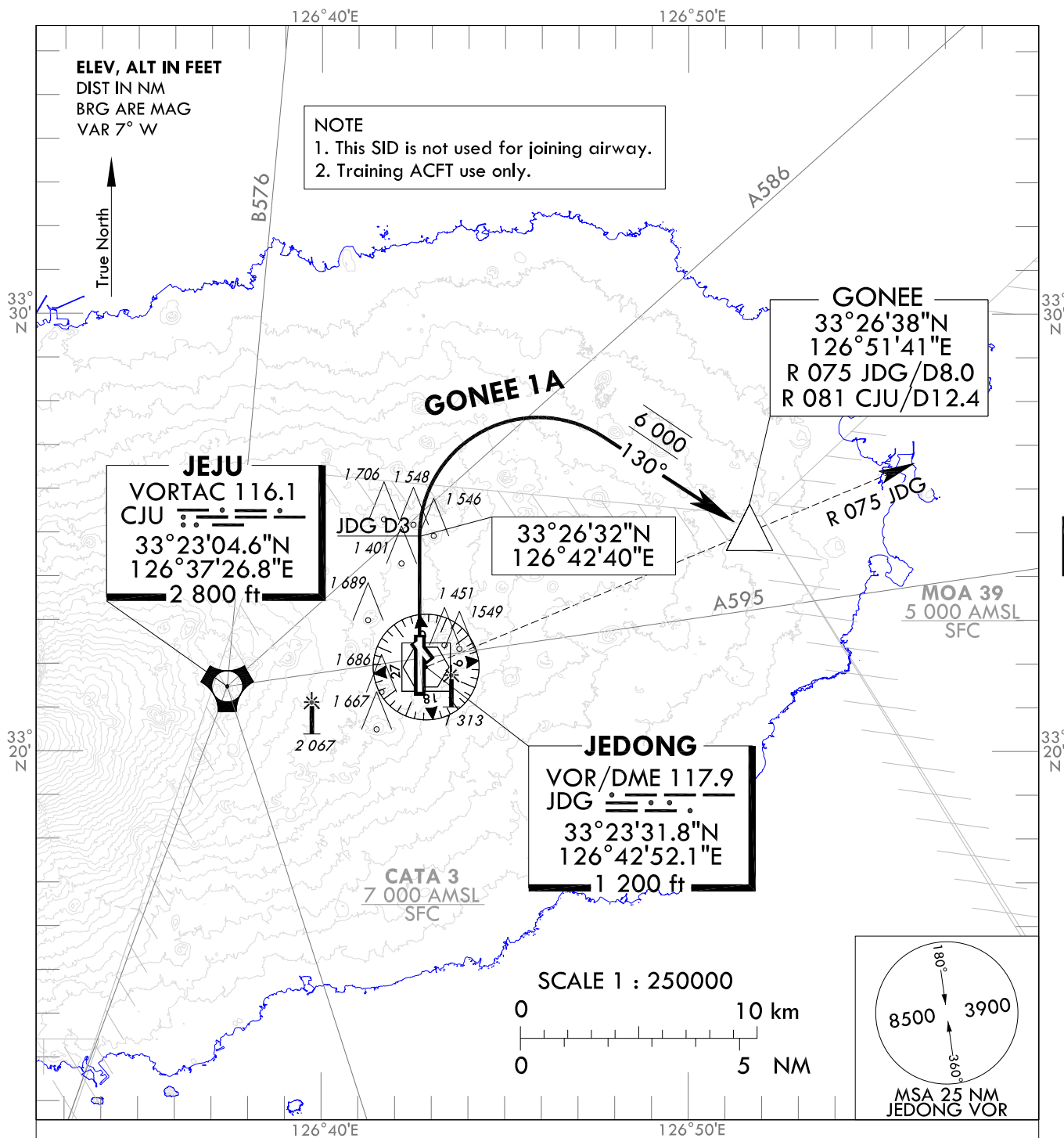
Change : Establishment of standard instrument departure procedure for RWY 01(RNAV AKPON 1M).

STANDARD DEPARTURE CHART
INSTRUMENT (SID) - ICAO

TRANSITION ALT 14 000
TRANSITION LVL FL 140

JEJU DEP 119.225
JEONGSEOK TWR 124.35

JEJU/Jeongseok(RKPD)
RWY 01
GONEE 1A



GENERAL INFORMATION

1. Minimum climb gradient 7.2% to 6 000 ft for ATC purpose and 5.5% to 2 100 ft for avoiding OBST.
2. If unable to comply with flight restrictions, advise ATC before departure for alternatives.
3. Departure turn limited to 210 kt IAS maximum.
4. Within JEJU TMA, maximum 250 kt IAS below 10 000 ft.

GONEE ONE ALPHA DEPARTURE

TAKE OFF RWY 01 : Direct R 004 JDG / D3, turn right HDG 130° to intercept R 075 JDG, proceed to GONEE at 6 000 ft, then as directed by ATC. Maintain 6 000 ft until instructed by ATC.

Change : Establishment of coordinates for JDG D3 and Information of GONEE 1A departure.

INTENTIONALLY

LEFT

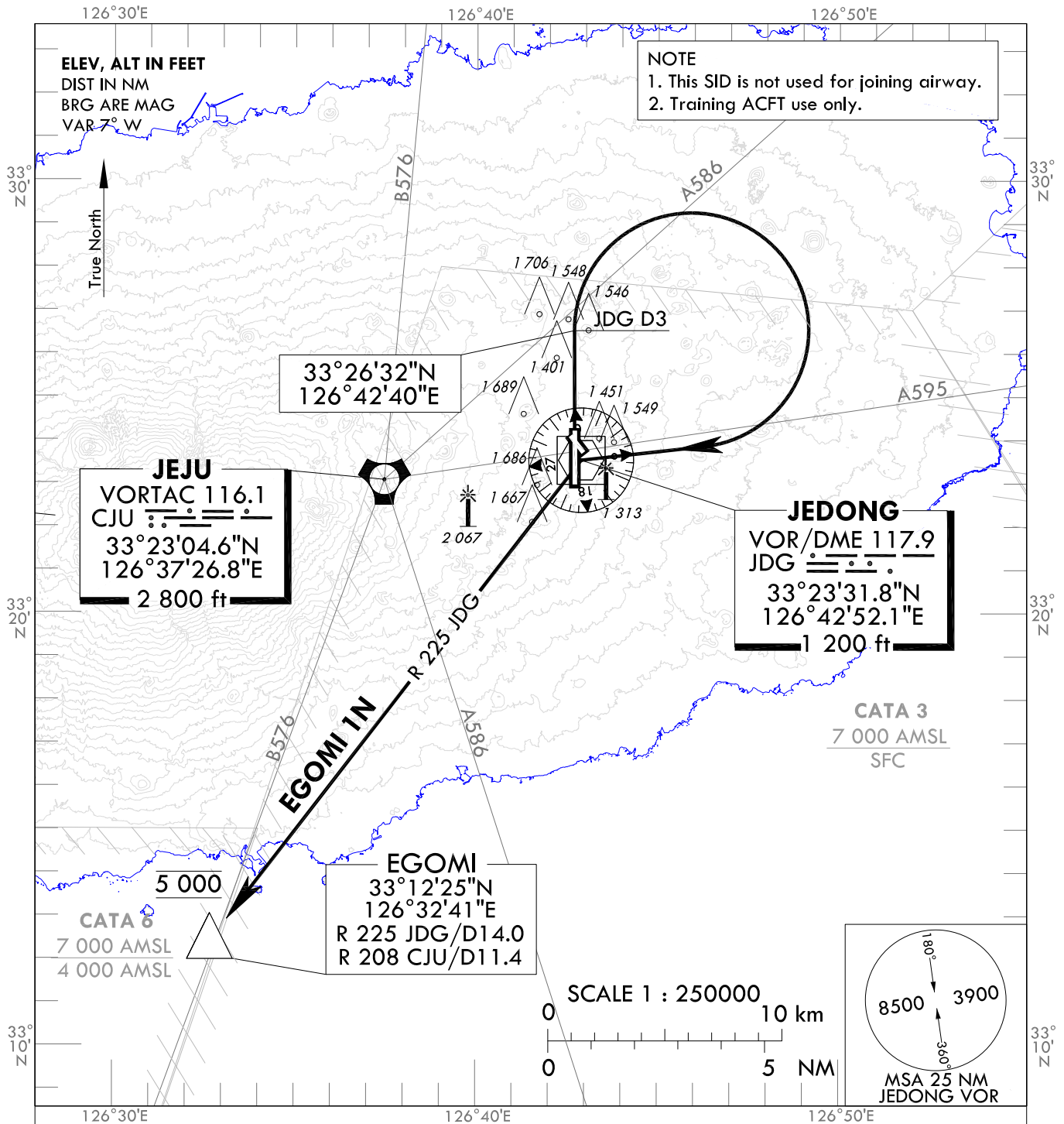
BLANK

STANDARD DEPARTURE CHART
INSTRUMENT (SID) - ICAO

TRANSITION ALT 14 000
TRANSITION LVL FL 140

JEJU DEP 119.225
JEONGSEOK TWR 124.35

JEJU/Jeongseok(RKPD)
RWY 01
EGOMI 1N



GENERAL INFORMATION

1. Minimum climb gradient 5.4% required to 5 000 ft for ATC purpose and avoiding OBST.
2. If unable to comply with flight restrictions, advise ATC before departure for alternatives.
3. Departure turn limited to 210 kt IAS maximum.
4. Within JEJU TMA, maximum 250 kt IAS below 10 000 ft.

EGOMI ONE NOVEMBER DEPARTURE

TAKE OFF RWY 01 : Direct R 004 JDG / D3, turn right direct to JDG, then proceed on R 225 JDG to EGOMI at 5 000 ft, then as directed by ATC. Maintain 5 000 ft until instructed by ATC.

Change : Establishment of coordinates for JDG D3 and Information of EGOMI 1N departure.

INTENTIONALLY

LEFT

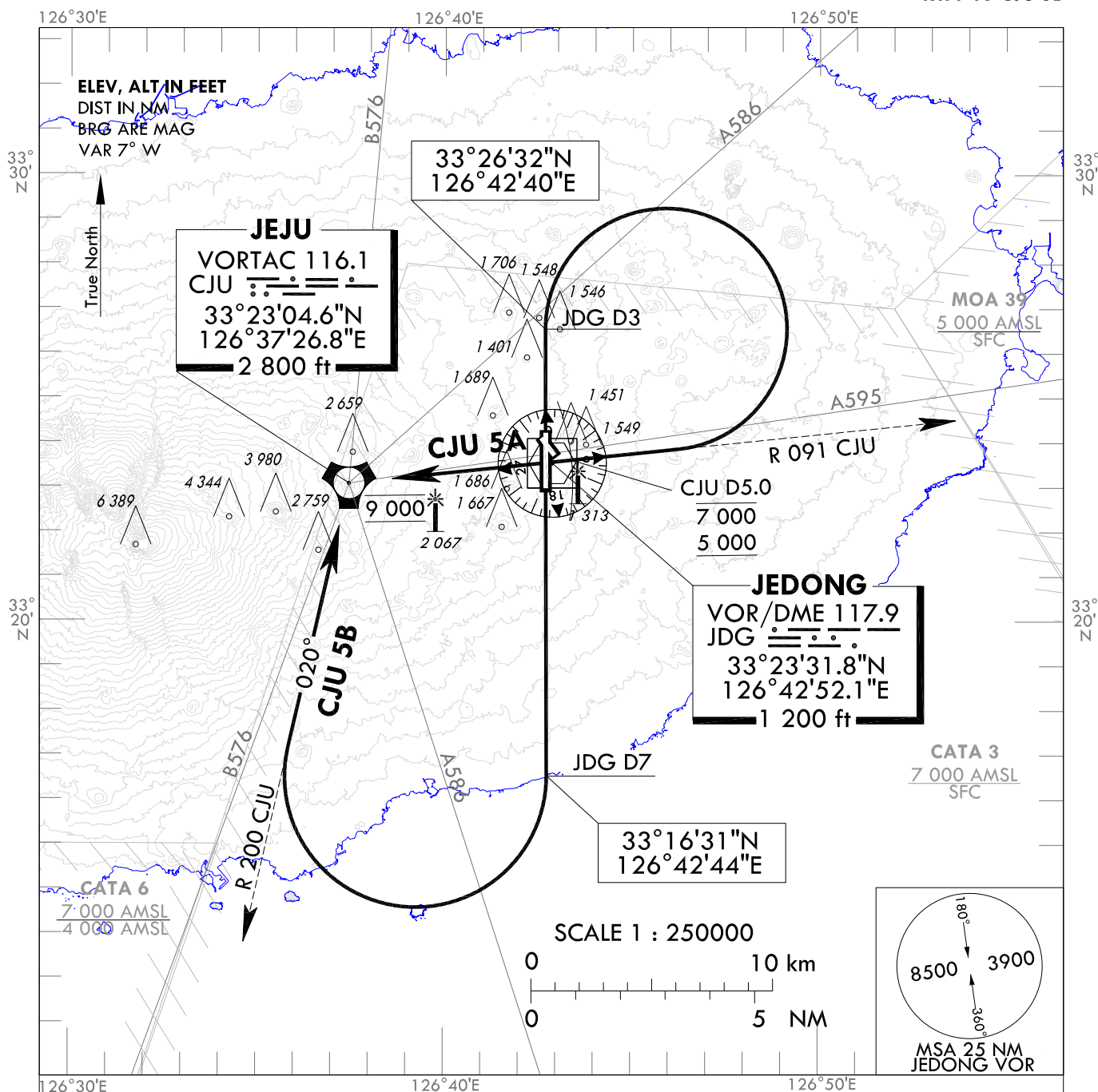
BLANK

STANDARD DEPARTURE CHART
INSTRUMENT (SID) - ICAO

TRANSITION ALT 14 000
TRANSITION LVL FL 140

JEJU DEP 119.225
JEONGSEOK TWR 124.35

JEJU/Jeongseok(RKPD)
RWY 01 CJU 5A
RWY 19 CJU 5B



GENERAL INFORMATION

1. CJU 5A : 7.9% climb gradient required to 9 000 ft for ATC purpose and 5.4% to 2 700 ft for avoiding OBST.
2. CJU 5B : 6.5% climb gradient required to 9 000 ft for ATC purpose and 5.4% to 5 300 ft for avoiding OBST.
3. If unable to comply with flight restrictions, advise ATC before departure for alternatives.
4. Departure turn limited to 210 kt IAS maximum.
5. Within JEJU TMA, maximum 250 kt IAS below 10 000 ft.

JEJU FIVE ALPHA DEPARTURE

TAKE OFF RWY 01 : Direct R 004 JDG / D3, turn right to intercept R 091 CJU, then proceed to CJU.
Cross R 091 / D5.0 CJU between 5 000 ft and 7 000 ft, CJU at 9 000 ft.
Maintain 9 000 ft until instructed by ATC.

JEJU FIVE BRAVO DEPARTURE

TAKE OFF RWY 19 : Direct R 188 JDG / D7, turn right to intercept R 200 CJU,
then proceed to CJU at 9 000 ft. Maintain 9 000 ft until instructed by ATC.

Change : Establishment of coordinates for JDG D3, JDG D7 and Information of CJU 5A, CJU 5B departure.

INTENTIONALLY

LEFT

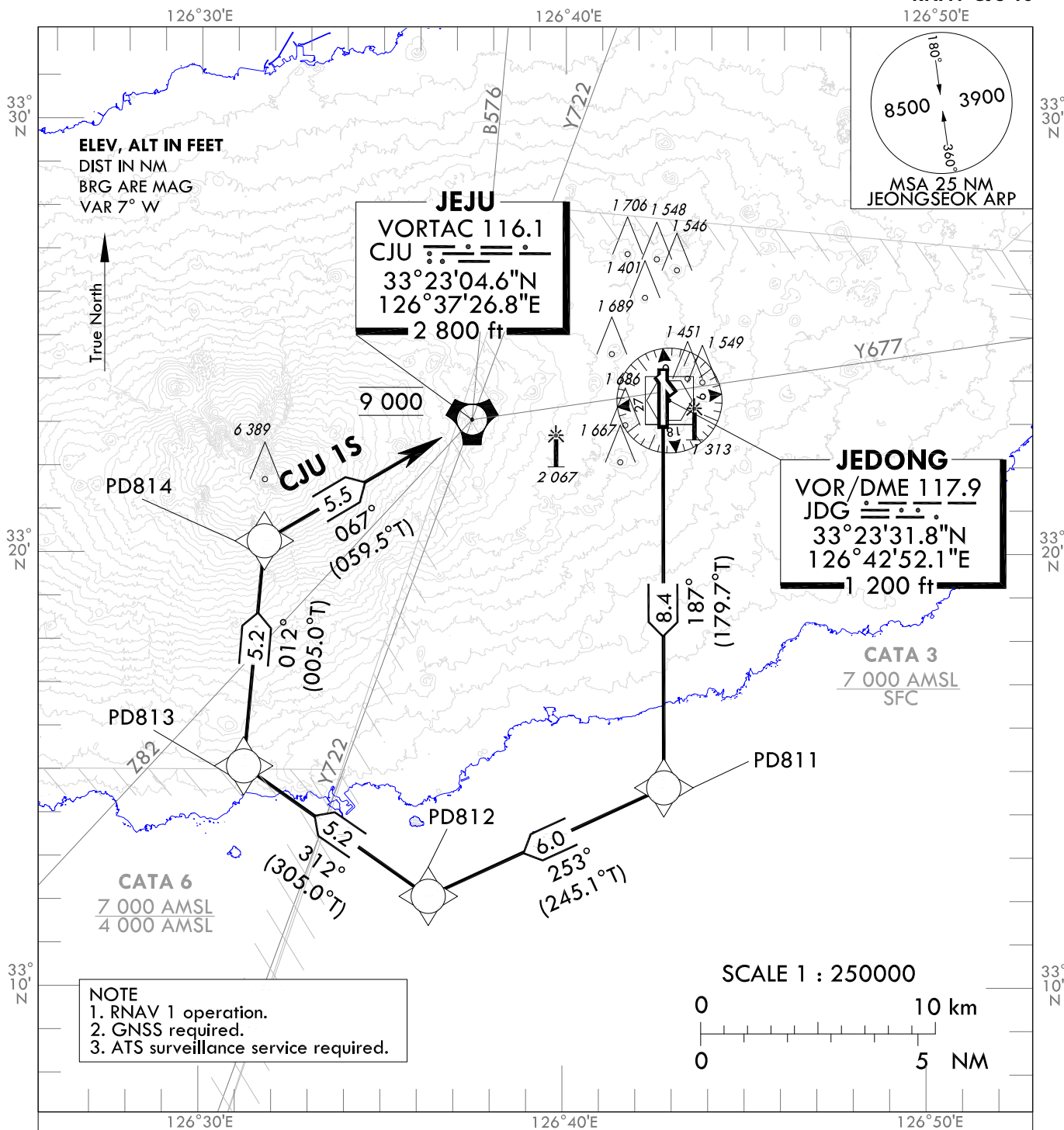
BLANK

STANDARD DEPARTURE CHART
INSTRUMENT (SID) - ICAO

TRANSITION ALT 14 000
TRANSITION LVL FL 140

JEJU DEP 119.225
JEONGSEOK TWR 124.35

JEJU/Jeongseok(RKPD)
RWY 19
RNAV CJU 1S



NOTE
1. RNAV 1 operation.
2. GNSS required.
3. ATS surveillance service required.

SCALE 1 : 250000



GENERAL INFORMATION

1. CJU 1S : 5.9% climb gradient required to 9 000 ft for ATC purpose and avoiding OBST.
2. If unable to comply with flight restrictions or RNAV 1, advise ATC before departure for alternatives.
3. Departure turn limited to 210 kt IAS maximum until PD814.
4. Within JEJU TMA, maximum 250 kt IAS below 10 000 ft.

RNAV JEJU ONE SIERRA DEPARTURE : PD811 - PD812 - PD813 - PD814 - CJU

Change : Withdrawal of Y579.

JEJU/Jeongseok(RKPD)
RWY 19
RNAV CJU 1S

AERONAUTICAL DATA TABULATION

Standard Instrument Departure Procedure Coding Tables

RNAV CJU 1S

Serial Number	Path Descriptor	Waypoint Identifier	Fly-over	Course/Track °M(°T)	Distance (NM)	Turn direction	Altitude (ft)	Speed (kt)	Coordinates	VPA/RDH	Navigation specification	Remarks
001	CF	PD811	-	187(179.7)	8.4	-	-	-210	33°14'36.2"N 126°42'44.6"E	-	RNAV 1	-
002	TF	PD812	-	253(245.1)	6.0	-	-	-210	33°12'05.0"N 126°36'17.4"E	-	RNAV 1	-
003	TF	PD813	-	312(305.0)	5.2	-	-	-210	33°15'04.4"N 126°31'12.8"E	-	RNAV 1	-
004	TF	PD814	-	012(005.0)	5.2	-	-	-210	33°20'15.8"N 126°31'45.3"E	-	RNAV 1	-
005	TF	CJU	-	067(059.5)	5.5	-	@9 000	-	33°23'04.6"N 126°37'26.8"E	-	RNAV 1	-

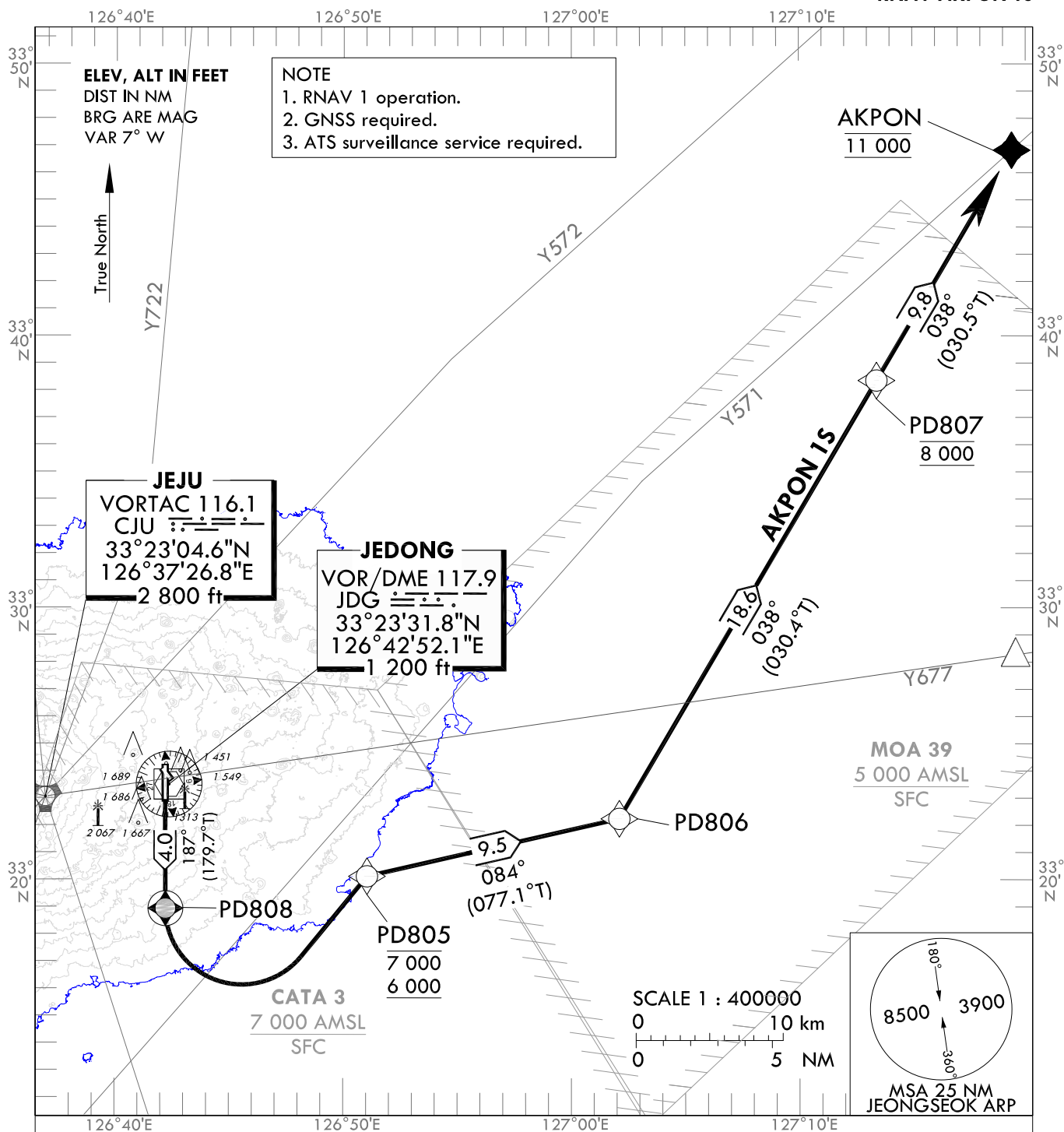
Change : Amended phrase(VPA/TCH → VPA/RDH).

STANDARD DEPARTURE CHART
INSTRUMENT (SID) - ICAO

TRANSITION ALT 14 000
TRANSITION LVL FL 140

JEJU DEP 119.225
JEONGSEOK TWR 124.35

JEJU/Jeongseok(RKPD)
RWY 19
RNAV AKPON 1S



GENERAL INFORMATION

1. AKPON 1S : 7.1% climb gradient required to 6 000 ft for ATC purpose.
2. If unable to comply with flight restrictions or RNAV 1, advise ATC well before departure for alternatives.
3. Departure turn limited to 210 kt IAS maximum until PD805.
4. Within JEJU TMA, maximum 250 kt IAS below 10 000 ft.

RNAV AKPON ONE SIERRA DEPARTURE : PD808 - PD805 - PD806 - PD807 - AKPON

Change : Establishment of standard instrument departure procedure for RWY 19(RNAV AKPON 1S).

JEJU/Jeongseok(RKPD)
RWY 19
RNAV AKPON 1S

AERONAUTICAL DATA TABULATION

Standard Instrument Departure Procedure Coding Tables

RNAV AKPON 1S

Serial Number	Path Descriptor	Waypoint Identifier	Fly-over	Course/Track °M(°T)	Distance (NM)	Turn direction	Altitude (ft)	Speed (kt)	Coordinates	VPA/ RDH	Navigation specification	Remarks
001	CF	PD808	Y	187(179.7)	4.0	-	-	-210	33°18'57.9"N 126°42'43.1"E	-	RNAV 1	-
002	DF	PD805	-	-	-	L	-7 000 + 6 000	-210	33°20'09.1"N 126°51'32.7"E	-	RNAV 1	-
003	TF	PD806	-	084(077.1)	9.5	-	-	-	33°22'16.2"N 127°02'36.3"E	-	RNAV 1	-
004	TF	PD807	-	038(030.4)	18.6	-	@8 000	-	33°38'22.3"N 127°13'54.7"E	-	RNAV 1	-
005	TF	AKPON	-	038(030.5)	9.8	-	@11 000	-	33°46'49.6"N 127°19'53.0"E	-	RNAV 1	-

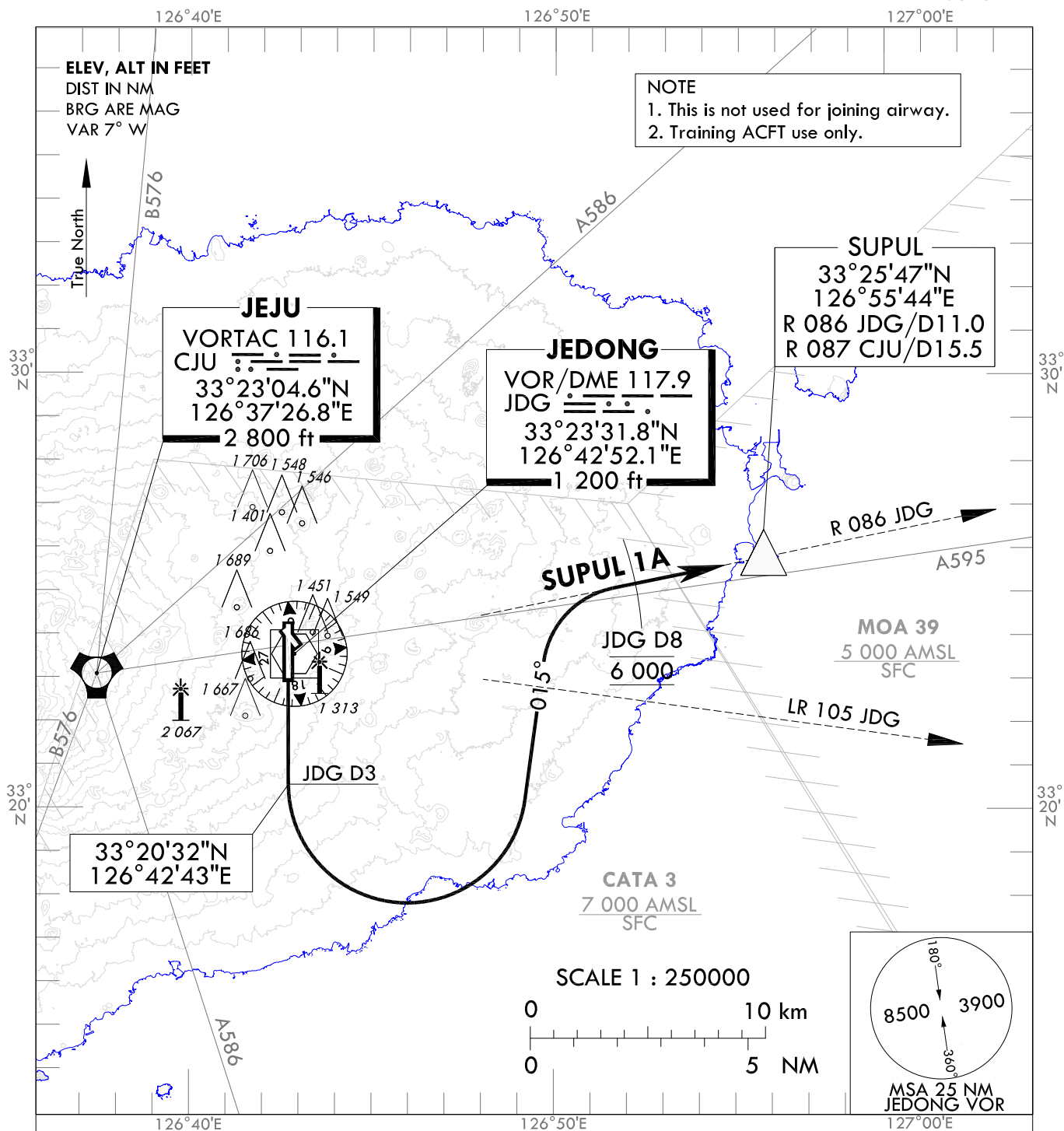
Change : Establishment of standard instrument departure procedure for RWY 19(RNAV AKPON 1S).

STANDARD DEPARTURE CHART
INSTRUMENT (SID) - ICAO

TRANSITION ALT 14 000
TRANSITION LVL FL 140

JEJU DEP 119.225
JEONGSEOK TWR 124.35

JEJU/Jeongseok(RKPD)
RWY 19
SUPUL 1A



GENERAL INFORMATION

1. Minimum climb gradient 6.3% to 6 000 ft for ATC purpose and avoiding OBST.
2. If unable to comply with restrictions, advise ATC before departure for alternatives.
3. Departure turn limited to 210 kt IAS maximum.
4. Within JEJU TMA, maximum 250 kt IAS below 10 000 ft.

SUPUL ONE ALPHA DEPARTURE

TAKE OFF RWY 19 : Direct R 190 JDG / D3, turn left HDG 015° to intercept R 086 JDG.
Proceed to SUPUL at 6 000 ft, then as directed by ATC.
Reach at 6 000 ft until passing JDG D8. Maintain 6 000 ft until instructed by ATC.

Change : Establishment of coordinates for JDG D3 and Information of SUPUL 1A departure.

INTENTIONALLY

LEFT

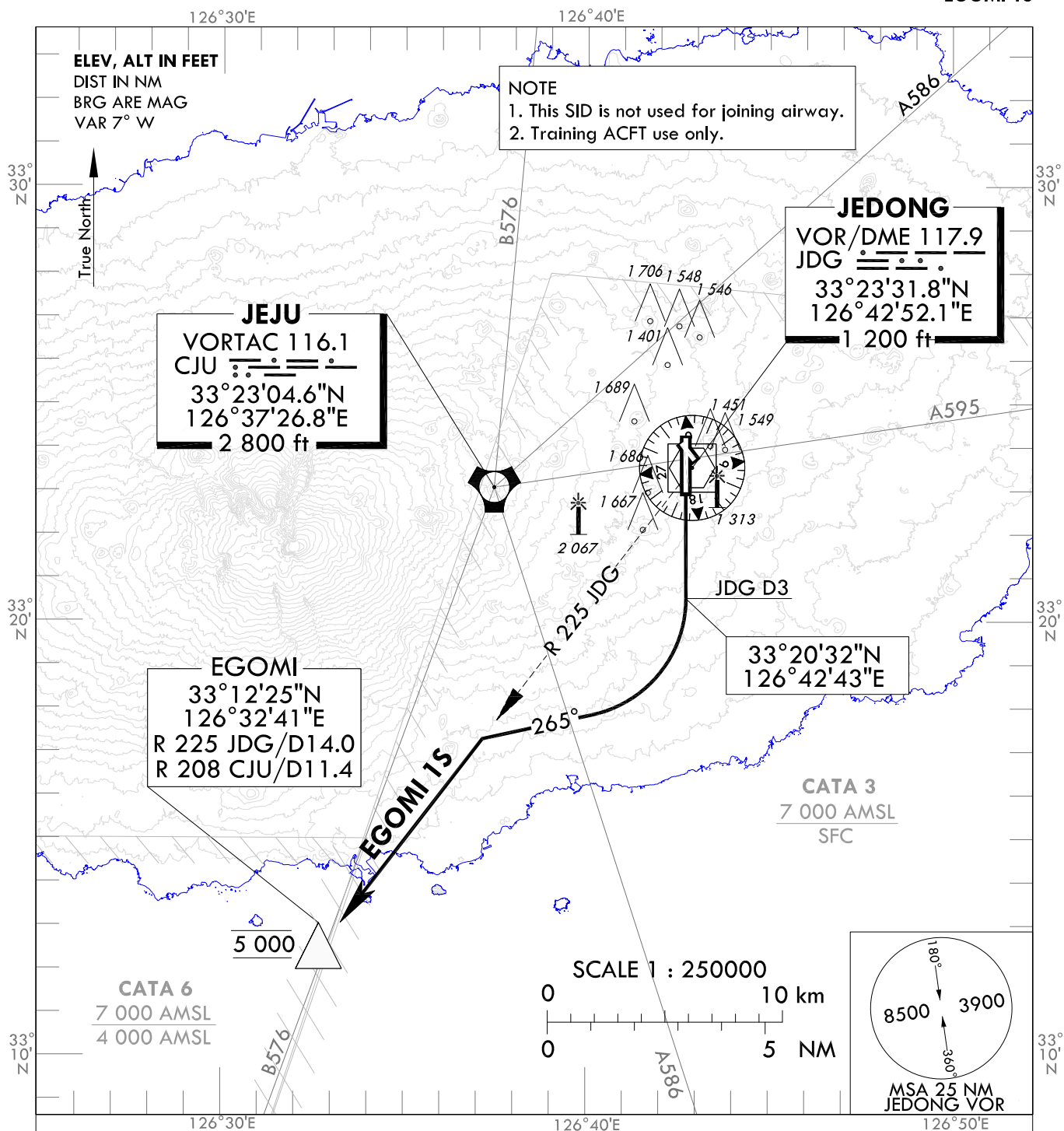
BLANK

STANDARD DEPARTURE CHART
INSTRUMENT (SID) - ICAO

TRANSITION ALT 14 000
TRANSITION LVL FL 140

JEJU DEP 119.225
JEONGSEOK TWR 124.35

JEJU/Jeongseok(RKPD)
RWY 19
EGOMI 1S



GENERAL INFORMATION

1. Minimum climb gradient 4.5% required to 5 000 ft for ATC purpose and avoiding OBST.
2. If unable to comply with flight restrictions, advise ATC before departure for alternatives.
3. Departure turn limited to 210 kt IAS maximum.
4. Within JEJU TMA, maximum 250 kt IAS below 10 000 ft.

EGOMI ONE SIERRA DEPARTURE

TAKE OFF RWY 19 : Direct R 190 JDG / D3, turn right HDG 265° to intercept R 225 JDG, then proceed to EGOMI at 5 000 ft, then as directed by ATC. Maintain 5 000 ft until instructed by ATC.

Change : Establishment of coordinates for JDG D3 and Information of EGOMI 1S departure.

INTENTIONALLY

LEFT

BLANK